



*Rely on it.*



New appearance  
for your facade



RENOLIT  
REFACE

---

Smart  
Solutions





## Everything is possible – with **RENOLIT REFACE**

Refining a building by visually renovating its facade. That is the idea behind the **RENOLIT REFACE** facade film.

Property owners benefit threefold: They save themselves the costly complete renovation of the facade and are pleased with the long-term value retention and attractive appearance of their property.

With **RENOLIT REFACE**, buildings regain an attractive appearance and the facade stays like new for longer.

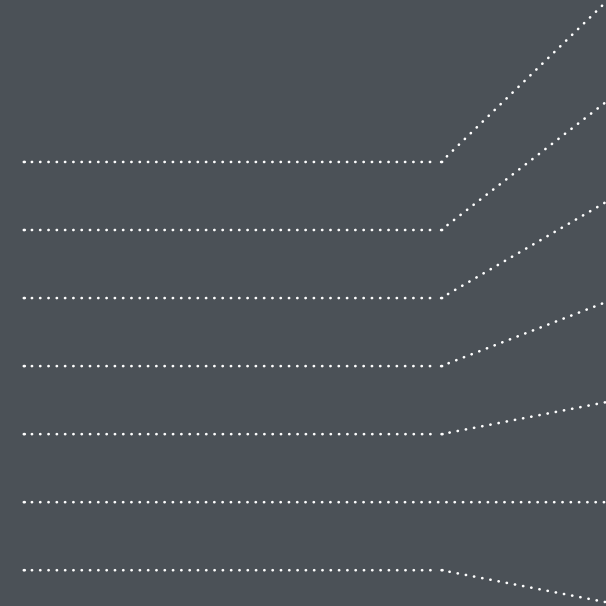
With the innovative self-adhesive multi-layer film from **RENOLIT**, you can freshen up the building envelope quickly, cost-effectively and permanently. Like a second skin, the weather-resistant film covers facades or facade elements made of metal and HPL and gives them a new radiance.

Furthermore, the operation is not impaired. Thus, there are no disturbances or interruptions to the use of the building and no inconveniences such as odours or spray mist.

By the way: **RENOLIT REFACE** also scores in terms of sustainability. Homeowners not only save themselves the repeated painting of the facade – as there is no complete renovation, no dismantling and thus no metal panels have to be disposed of and no new ones manufactured.

RENOLIT  
REFACE

Advantages





## FUNCTIONAL



With a film width of up to 1.50 m, **RENOLIT REFACE** is suitable for almost all common facade formats. The high-performance film is flame retardant. The silk-matt embossed, structured surface levels out slight unevenness. Unlike paint coats, films have a uniform thickness.

## VERSATILE



A wide range of colours ensures that the appearance of a building can be completely changed. Together with the plotter capability of **RENOLIT REFACE**, this results in endless design possibilities.

## EASY TO APPLY



Skilled applicators can easily apply **RENOLIT REFACE** in one operation. Due to its low weight, the film is very easy to apply on site. Even the use of the building remains unaffected during installation.

## SUSTAINABLE



Easy cleaning and long weathering stability result in permanently low maintenance costs. It goes without saying that **RENOLIT REFACE** does not emit any solvents. Since the panels can be reused, less metal is also consumed.

## EASY TO CLEAN



The dirt-repellent PVDF-surface makes cleaning easier and prevents strongly adhering dirt (Easy to Clean). Even some graffiti can be removed. In case of damage, the film can be replaced quickly and inexpensively.

## ECONOMICAL



Covering with **RENOLIT REFACE** is around 50 percent cheaper than replacing facade panels. The long service life and easy cleaning also reduce the overall costs.

## UV- AND WEATHERING RESISTANT



**RENOLIT REFACE** remains weather-resistant for at least ten years due to the transparent acrylate protective layer and high-quality pigments.



## REFERENZ

### Economic

The owner of the building on the corner of Wilmersdorfer Straße and Schillerstraße decided to renovate the facade and adapt it to the new street scene. Norenz Foliensysteme, a certified installer of **RENOLIT REFACE**, had advised the owner to use the high-performance film: „The facade was in a worn condition and needed to be renovated both cost-effectively and in a high-quality and visually appealing way," says Managing Director Andreas Norenz. The colour in particular played a major role: „A property lives through its colour - the facade is a building's business card. The client decided on the colours anthracite grey, signal white and traffic grey." A visual highlight has been created opposite the Wilmersdorfer Arcaden from a formerly dilapidated facade.

„For revitalisation, the worn facade was to be renovated in a cost-effective, yet high-quality and visually appealing manner."





Berlin, Wilmersdorfer Strasse – this was the capital's first pedestrian zone, but the charm of past decades has faded. At the turn of the millennium, it was decided to restore the street to some of its former glory. The building was revitalised to make it more attractive for potential new tenants.

AFTER





## REFERENZ

### Sustainable

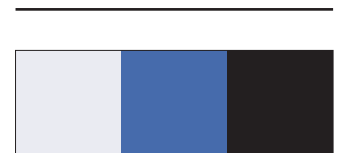
In cooperation with French star designer, Ora Ito, and the globally active concept artist, Daniel Buren, Euragone Investment Management intended to equip the hotel with a singular, unique look. For this end, the facade was adorned with black and white stripes, a trademark of Daniel Buren. The colour and the semi-gloss finish of the high-performance film providing the building with an innovative, stylish look were simply amazing. All project partners were enthusiastic about the newly designed facade and decided to use the film for the decoration of the foyer and hotel corridors as well. Thanks to the broad colour range, the blue shade applied to the facade was a perfect match to complement the interior design.

„We were able to contribute another visual highlight to this already diverse and modern city.“





Paris, 15th Arrondissement, near the Eiffel Tower and right on the Seine – here the new YOOMA hotel has opened its doors in June 2017. The facade and interior were to acquire new high-quality looks, and they should, as well, underline the creative touch of the building.





## REFERENZ

### Functional

The architect did not want to simply design the facade of the sports hall in one or more colours, but to give it a certain something with the sports motifs. However, not only the filigree sports motifs were a special challenge, but also the surface made of HPL panels, which required special bonding. The surface was sanded and treated with a bonding agent so that the film achieved the necessary adhesion. The sports motifs were „plotted“, i.e. they were cut out of the film with a cutting plotter in order to adhere them to the façade. The plotter is computer-controlled and can read out the stored vector graphics of the motif with millimetre precision and pass them on to the cutting blade with an exact fit.

„The plotter capability of the film was decisive for the sophisticated facade design with the sports motifs.“





Lübeck – site of the Falkenfeld elementary school and gymnasium. To make its purpose apparent from the outside, images of athletes were applied to the facade. The dynamic motifs were cut out from the film with a cutting plotter.



## REFERENZ

### Easy to apply

The company wished to adapt the existing building to the muted anthracite of the new building, including aluminum mullions and transoms. These parts tend to oxidize and have stained over the years. The aim was not just to adapt the colours of the facades, but to protect the components as well. When processing the film, only the parts where film was applied needed cleaning. Other prep work could be omitted as well, creating a significant cost advantage. Processing the film for this small-scale building provided an advantage, too. Given that the acrylic adhesive takes 24 hours to fully bond, the film could easily be removed from the substrate to adjust the edge contours.

„Processing of the film was fast and easy because only relevant parts needed to be cleaned.“





Ratingen – this is where the global producer of frozen foods, Farmersland, has established its European headquarters. To extend its capacities, a new, identical administrative compound has been erected right next to a building constructed in 1995. To disguise 20 years of difference in age, a simple solution was needed.





## REFERENZ

UV- and  
weathering  
resistant

As a provider of innovative precision solutions, WESKO GmbH from Stollberg relies on a modern and appealing external appearance. However, the initially good-looking facade suffered too much damage and thus had to be completely replaced. The managing director, Claus-Peter Schneider, decided to carry out the facade renovation with the help of **RENOLIT** REFACE film after a trial application. The employees of the facade company were trained at short notice in the **RENOLIT** branch office in Frankenthal, as well as directly on site for two days. Afterwards, they were able to carry out the renovation on time. Since 2020, the entire building has shone in an ultramarine blue. The same blue that the building already used on the windows and doors. Mr Schneider was and is very enthusiastic about the result: „The film was available in exactly the shade of blue we needed for the refurbishment.“

„The colour variety at **RENOLIT** is a special advantage besides the practical batch sizes.“



AFTER



Stollenberg, WESKO GmbH - the building with the bright blue facade immediately catches the eye. After severe damage to the previous facade, an alternative to conventional facade renovation had to be found. The employees of the company were able to renovate the building after a short training without any problems.



## REFERENZ

---

### Easy to clean

The owner of the building had the sheet-metal cassettes with light gray coating cleaned regularly. As the facade roughened up over time, it had to be cleaned more and more often. To minimize expenses, the facade was to be renovated – with three prerequisites: The colour determined by the architect needed to be retained, and renovating costs as well as cleaning expenses were to be kept as low as possible. The large colour palette of **RENOLIT REFACE** provided the desired tone of gray. The film generally met all expectations. Due to its low surface tension, the top layer made of polyvinylidene fluoride (PVDF) protects the film against dirt and chemicals and functions like non-stick coating.

„Due to the dirt-repellant surface, the facade needs less cleaning, reducing costs significantly.“

Eindhoven – with its slanted facades at the front and back, as well as its large window area, the administrative building is an architectural eye catcher. To make it stay that way, the facade had been cleaned regularly – which had left its mark, too. With **RENOLIT REFACE**, cleaning intervals can be considerably reduced, preserving the facade.





## REFERENZ

---

### Versatile

The company colour is an important part of the entire presence of CLAAS and should be featured on the factory hall as well. With **RENOLIT REFACE**, the corporate colour could be applied easily to the facade as well. Thanks to the colours specifically produced for the customer, and the possibility of plotting the film in almost any desired form, the tailor-made solution was easy to realize. The film has a service life of at least 10 years with lasting weather and UV-resistance, as well as, colour-fastness. This turns the facade into a long-term advertising media, promoting the brand value in an elegant and cost-efficient way.

„The desire to design the facade with our corporate identity colour Seed Green was realized.“



Hockenheim – site of the factory hall of the international agricultural machinery corporation CLAAS. To associate the factory at first glance with the company, it received finishing touches in the corporate colours.





## REFERENZ

---

### Versatile

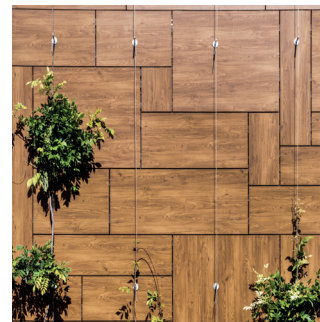
Customer requests are a big deal at RENOLIT – in fact 30,000 m<sup>2</sup> big to be exact.

The technology building near Munich consists of twelve buildings that belong together, for which the RENOLIT developed an extension of the RENOLIT REFACE range: Wood finish films. It was particularly important to the customer that the film had a long shelf life and resembled the original building facade.

"With our new wood-finish, we have extended our previous selection of films with a very natural element" says Helmut Schmitt, Projektmanager Facade at RENOLIT. Up to 25 film assemblers did an excellent job and completed the wrapping to the utmost satisfaction of the customer.

„The facade film in Country Oak design was the right decision, both in terms of quality and appearance.“

AFTER



Technology building, Munich – the very natural-looking facade enlivens the entire building and fits in perfectly with its surroundings. At times, 25 assemblers were working on the building at the same time. Office containers and sanitary facilities had to be set up for this.



RENOLIT  
REFACE

Processing



## Easy to apply: RENOLIT REFACE

Easy and fast processing, simple cleaning and long durability are important to you? Then **RENOLIT** REFACE is your first choice. The high-quality multi-layer film can be applied directly to facade elements even in windy conditions. The lightweight film protects the substrate and is flexible enough to bend easily around edges. Small application errors can be easily corrected as the film can be repositioned well.

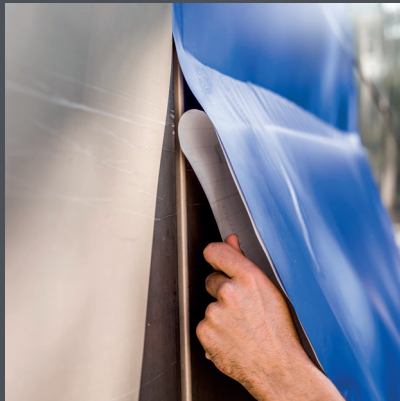




# 01

## BASIC CLEANING

Remove any colour or dirt particles. Do not glue over screws. Fill in depressions with filler. Remove silicone seals if possible. Clean the surface with isopropanol only, wipe again, and let dry completely.



# 02

## PREPARATION

Roughly cut out the desired format. Pay attention, as the film is always applied in the same direction. To avoid overlaps or for edge-to-edge bonding (English Cut) add 5 cm. Pre-treat areas smaller than 10 mm with a primer. Areas smaller than 5 mm cannot be processed.



# 03

## APPLICATION

Remove liner from the upper edge, position the film, and paste it slightly. Remove backing and wipe the film with a felt squeegee. Apply the film lightly on to the substrate without pressure, then squeegee again, now applying pressure both on areas and edges. Remove bubbles by squeegeeing to the side.



# 04

## TRIMMING

Use only new, strong, and high-quality blades. When cutting the edges, position the blade at a 45° angle to the surface. Don't cut into the substrate. Cut out any required holes. Where necessary, trim contours and edges.



# 05

## FINAL CLEANING

After installation, the entire surface has to be wiped again with isopropanol to remove fingerprints and other traces.



# 06

## FINISHED FACADE

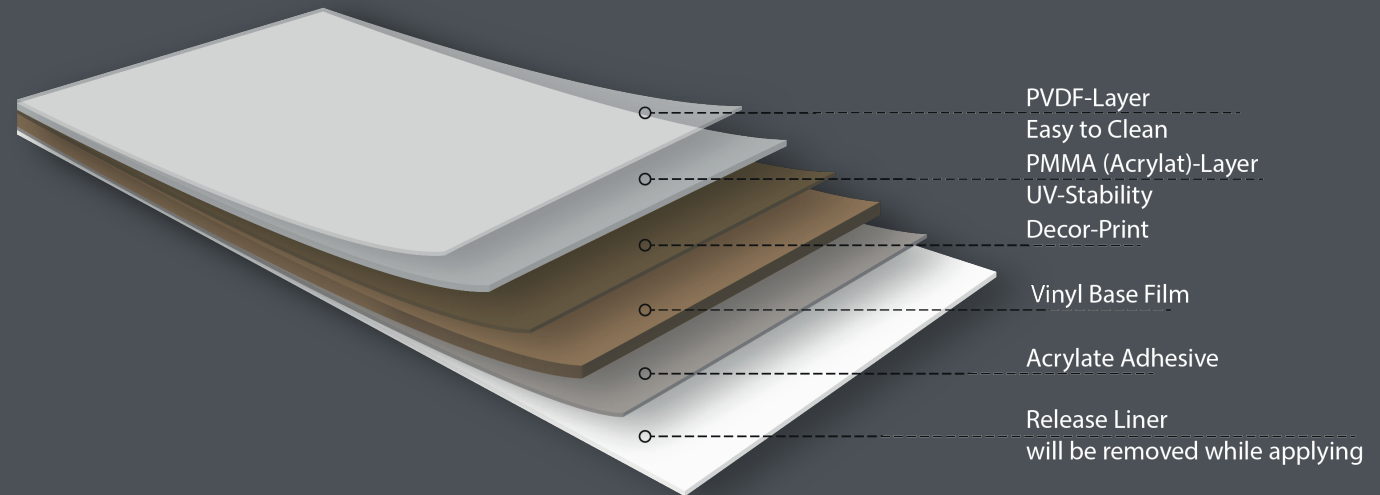
After the application of the **RENOLIT REFACE** film, the facade of the building will shine in brilliant new colours.



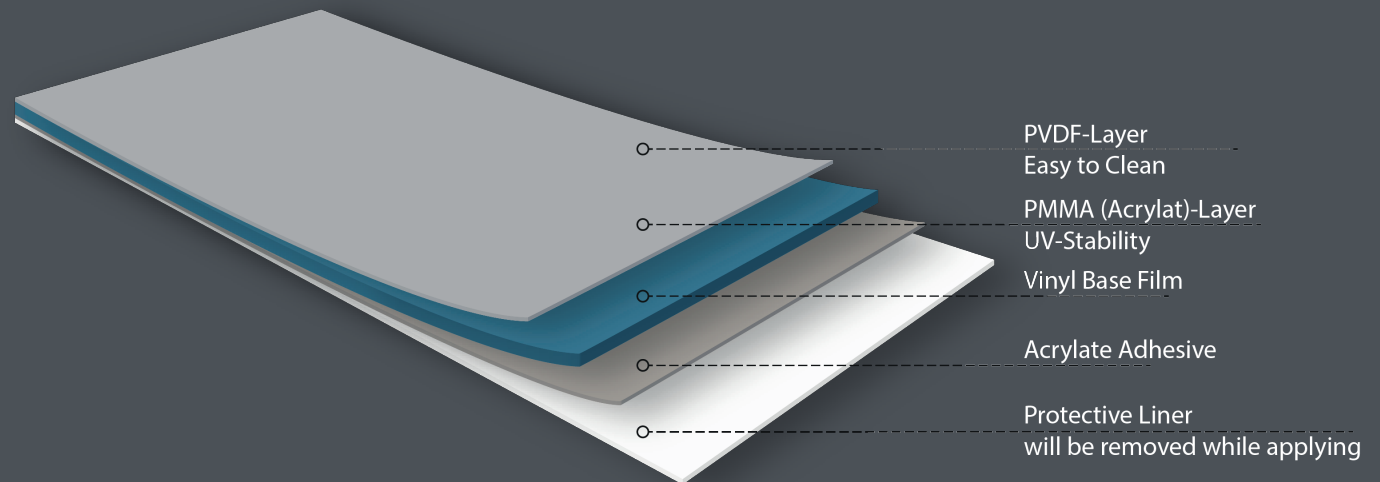
## RENOLIT REFACE

### Information

#### DECOR FILM



#### PLAIN COLOURS



Roll length: 50 lfm

Roll width: 1300 mm

Film strength: 160  $\mu$

Roll weight: 25 kg

Minimum quantity: 65 m<sup>2</sup>, available colours

(For plain colours, individual colour requests can be realised.)

Minimum quantity for decor film on request.

## HIGH-QUALITY MULTILAYER FILM

**RENOLIT REFACE** has been developed and designed specifically for the refurbishment and decoration of untreated, coated, and anodized surfaces. With its strong adhesion to smooth substrates such as aluminium, metal and HPL, the multi-layer film is an optimal alternative to lacquering. Other substrates must be tested in consultation with our application technology. Irrespective of this, each object is subjected to a surface and adhesive strength test before the start of the project.

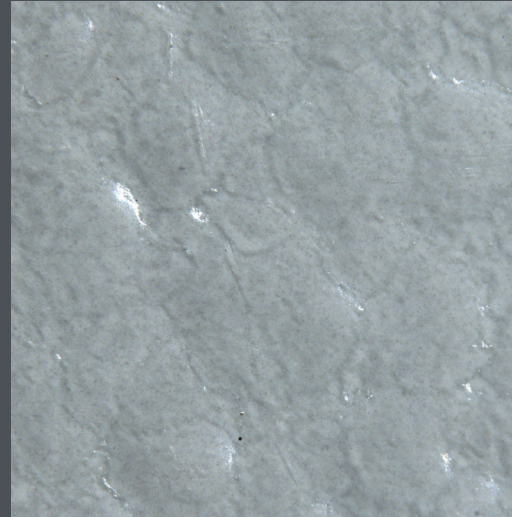
## WEATHERING RESISTANCE AND GUARANTEE

The film is rated for weather resistance for at least 10 years. This increases the service life of the facade and reduces maintenance expenses significantly. If processing guidelines are observed, **RENOLIT** warrants a special guarantee of at least 10 years.

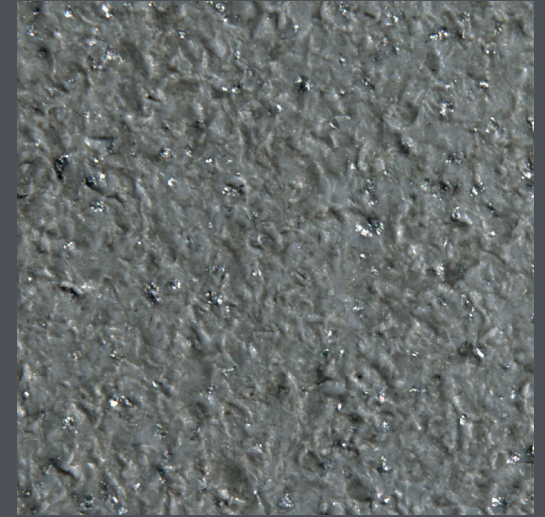
## FIRE CHARACTERISTICS

The facade films are flame retardant, meeting the requirements of EN 13501-1 according to SBI test in class C-1, d0

## SURFACE WITH RENOLIT REFACE



## OBERFLÄCHE PULVERLACKIERUNG



The microscopic image, magnified 50 times, demonstrates the surface roughness and its impact on improved cleanability of **RENOLIT REFACE** facade film, compared to powder coating.



**RENOLIT SE**

Market Unit Facade  
Horchheimer Str. 50  
67547 Worms | Germany

Phone: +49.6233.321.1575  
facade@renolit.com  
[www.renolit.com/facade](http://www.renolit.com/facade)

Follow us on  
Facebook and LinkedIn



Scan the QR code and learn more.  
[www.renolit.com/facade](http://www.renolit.com/facade)



*Rely on it.*